

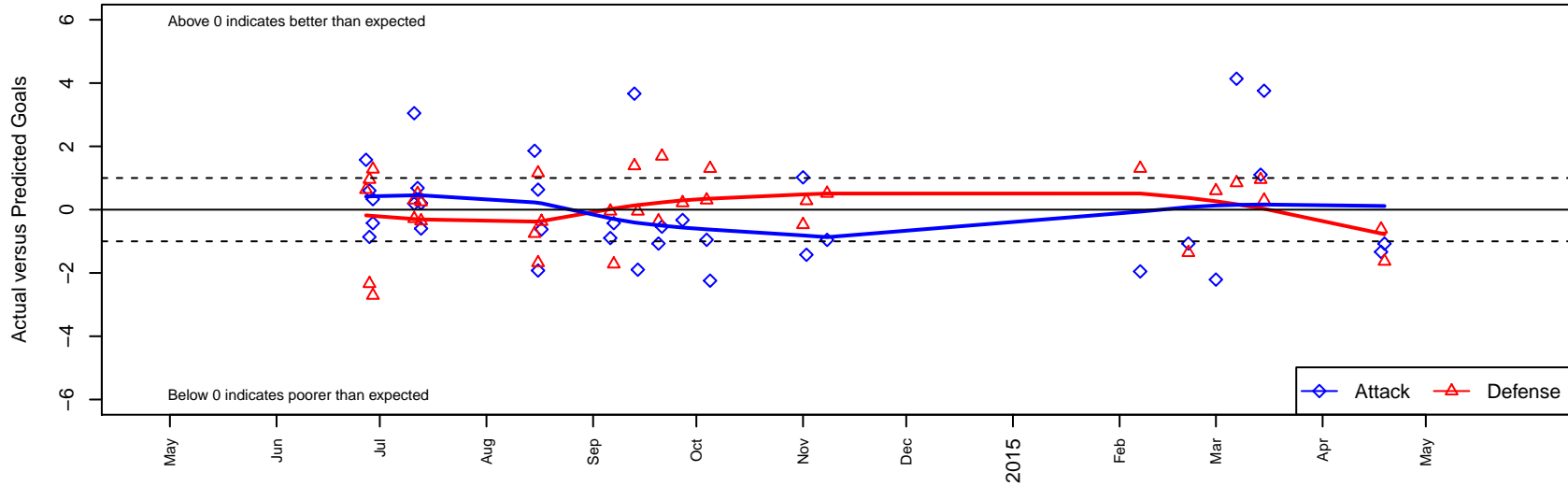
Washington Timbers Forrest B02

Washington Timbers
 Vancouver, WA
 B02 total strength=504
 attack=0.41 defense=0.31
 fall league = PTT-B B02 Timbers Div 1
 spr league = Spr OYS B02 Div 2 Green

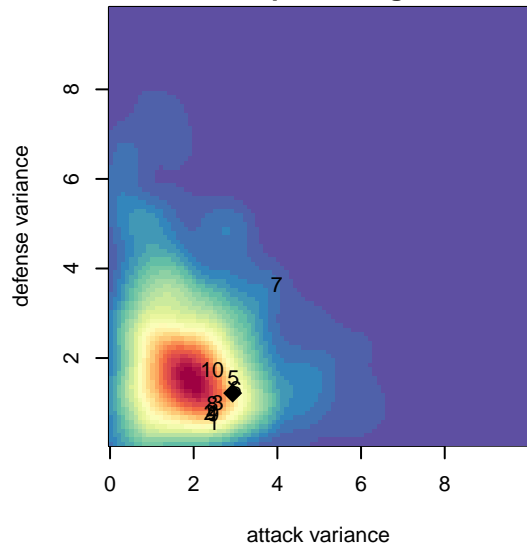
alt names used:
 WTFC B02 Forest
 WA Timbers FC B02 Forest
 WASHINGTON TIMBERSB02 FOREST
 WA Timbers B02 Forest
 WA Timbers B02 Forest
 WA Timbers B02 Forest

Venues played:
 2014 Clash At the Border Gold/Silver U12
 2014 PCU Summer Classic U12 Silver
 2014 Mt Hood Challenge U12
 2014 PTT-B B02 Timbers Div 1
 2014 OYS Presidents Cup B02
 2014 Spr OYS B02 Division 2 Green

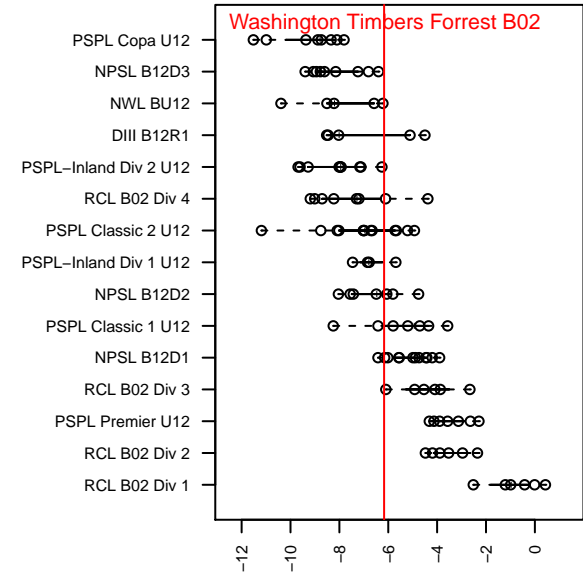
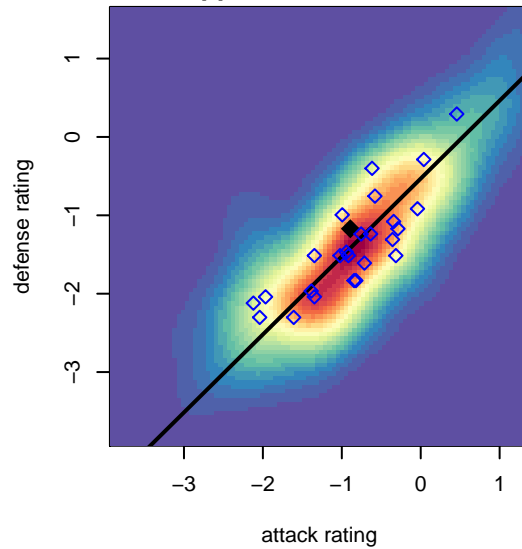
Washington Timbers Forrest B02
 Dots are actual minus expected GF (blue circles) and GA (red triangles).
 Blue line is smoothed change in attack strength. Red is smoothed change in defense strength.



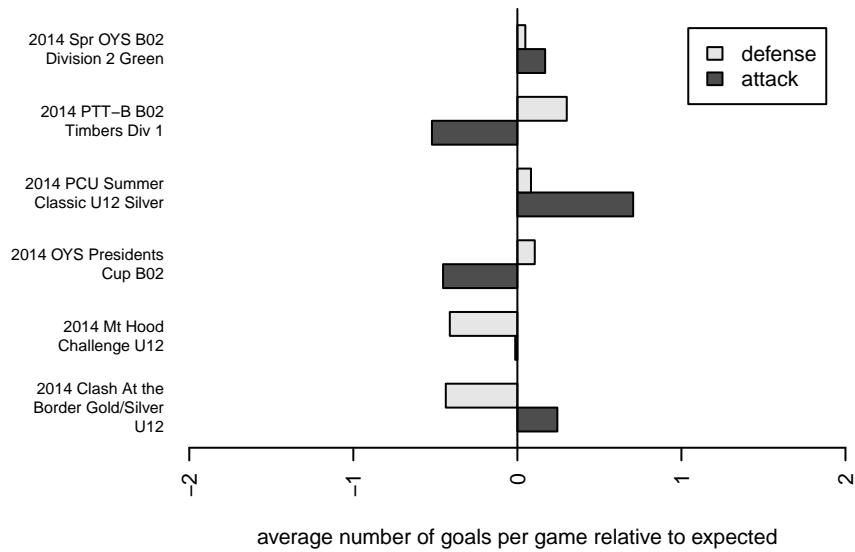
**attack and defense variance (black dot)
relative to other teams
and top 10 in region**



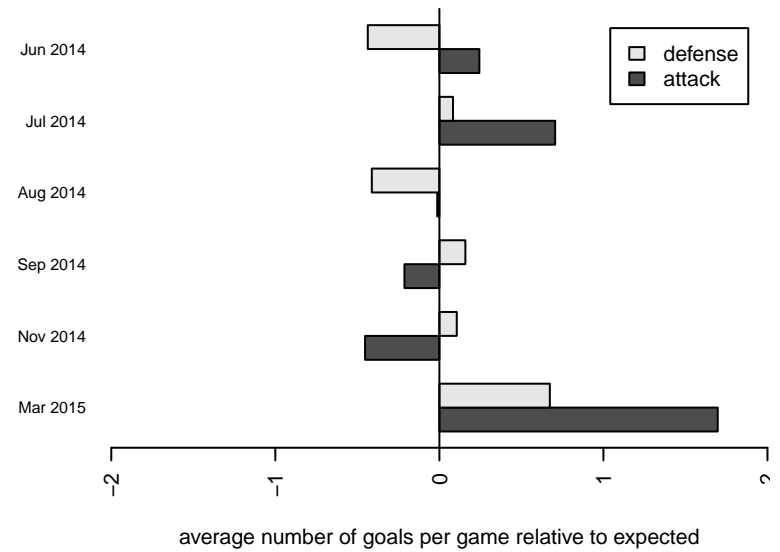
**attack and defense rating
relative to others at age
and all opponents in last 13 months**



Performance relative to 13 month average



Performance relative to 13 month average



| date | home | | away | | venue | pred.home | pred.away |
|------------|--------------------------------|---|---------------------------------|---|------------------------------------|-----------|-----------|
| 2015-04-19 | Washington Timbers Forrest B02 | 1 | NEU Barca Blue B02 | 3 | 2014 Spr OYS B02 Division 2 Green | 2.07 | 1.37 |
| 2015-04-18 | Washington Timbers Forrest B02 | 1 | Westside Timbers Mundial B02 | 2 | 2014 Spr OYS B02 Division 2 Green | 2.33 | 1.38 |
| 2015-03-15 | Washington Timbers Forrest B02 | 6 | HSC United B02 | 1 | 2014 Spr OYS B02 Division 2 Green | 2.24 | 1.30 |
| 2015-03-14 | PCU Gray B02 | 0 | Washington Timbers Forrest B02 | 4 | 2014 Spr OYS B02 Division 2 Green | 0.95 | 2.90 |
| 2015-03-07 | BSC HR Vapor B02 | 0 | Washington Timbers Forrest B02 | 6 | 2014 Spr OYS B02 Division 2 Green | 0.85 | 1.86 |
| 2015-03-01 | ETFC Dortmund Red B02 | 0 | Washington Timbers Forrest B02 | 1 | 2014 Spr OYS B02 Division 2 Green | 0.60 | 3.21 |
| 2015-02-21 | Washington Timbers Forrest B02 | 0 | Eastside Timbers White B02 | 3 | 2014 Spr OYS B02 Division 2 Green | 1.07 | 1.64 |
| 2015-02-07 | BSC Portland Gold-Tiempo B02 | 0 | Washington Timbers Forrest B02 | 0 | 2014 Spr OYS B02 Division 2 Green | 1.30 | 1.95 |
| 2014-11-08 | Washington Timbers Forrest B02 | 3 | BSC Portland Vapor B02 | 0 | 2014 OYS Presidents Cup B02 | 3.95 | 0.51 |
| 2014-11-02 | PCU Black B02 | 1 | Washington Timbers Forrest B02 | 0 | 2014 OYS Presidents Cup B02 | 1.28 | 1.43 |
| 2014-11-01 | Academia Leon B02 | 3 | Washington Timbers Forrest B02 | 2 | 2014 OYS Presidents Cup B02 | 2.53 | 0.98 |
| 2014-10-05 | HSC United B02 | 0 | Washington Timbers Forrest B02 | 0 | 2014 PTT-B B02 Timbers Div 1 | 1.30 | 2.24 |
| 2014-10-04 | BSC Portland Gold-Tiempo B02 | 1 | Washington Timbers Forrest B02 | 1 | 2014 PTT-B B02 Timbers Div 1 | 1.30 | 1.95 |
| 2014-09-27 | Washington Timbers Forrest B02 | 1 | CSC Storm B02 | 2 | 2014 PTT-B B02 Timbers Div 1 | 1.33 | 2.21 |
| 2014-09-21 | Washington Timbers Forrest B02 | 1 | Washington Timbers Lime B02 | 0 | 2014 PTT-B B02 Timbers Div 1 | 1.54 | 1.69 |
| 2014-09-20 | Eastside Timbers White B02 | 2 | Washington Timbers Forrest B02 | 0 | 2014 PTT-B B02 Timbers Div 1 | 1.64 | 1.07 |
| 2014-09-14 | PCU Gray B02 | 1 | Washington Timbers Forrest B02 | 1 | 2014 PTT-B B02 Timbers Div 1 | 0.95 | 2.90 |
| 2014-09-13 | Westside Timbers Mundial B02 | 0 | Washington Timbers Forrest B02 | 6 | 2014 PTT-B B02 Timbers Div 1 | 1.38 | 2.33 |
| 2014-09-07 | Washington Timbers Forrest B02 | 1 | PCU Black B02 | 3 | 2014 PTT-B B02 Timbers Div 1 | 1.43 | 1.28 |
| 2014-09-06 | Washington Timbers Forrest B02 | 2 | PCU Gray B02 | 1 | 2014 PTT-B B02 Timbers Div 1 | 2.90 | 0.95 |
| 2014-08-17 | RVSC Timbers Red B02 | 3 | Washington Timbers Forrest B02 | 0 | 2014 Mt Hood Challenge U12 | 2.63 | 0.62 |
| 2014-08-16 | Washington Timbers Forrest B02 | 2 | Bend FC Timbers Red B02 | 1 | 2014 Mt Hood Challenge U12 | 1.37 | 2.16 |
| 2014-08-16 | FC Salmon Creek White B02 | 4 | Washington Timbers Forrest B02 | 0 | 2014 Mt Hood Challenge U12 | 2.32 | 1.92 |
| 2014-08-15 | Washington Timbers Forrest B02 | 5 | Eastside Timbers Green B02 | 2 | 2014 Mt Hood Challenge U12 | 3.14 | 1.25 |
| 2014-07-13 | Washington Timbers Forrest B02 | 2 | Washington Timbers Burgundy B02 | 1 | 2014 PCU Summer Classic U12 Silver | 1.80 | 1.24 |
| 2014-07-13 | Washington Timbers Forrest B02 | 0 | NEU Barca Silver B02 | 2 | 2014 PCU Summer Classic U12 Silver | 0.60 | 1.64 |
| 2014-07-12 | Washington Timbers Forrest B02 | 4 | FC Salmon Creek Blue B02 | 0 | 2014 PCU Summer Classic U12 Silver | 3.32 | 0.51 |
| 2014-07-11 | Washington Timbers Forrest B02 | 5 | BSC Portland Gold-Tiempo B02 | 1 | 2014 PCU Summer Classic U12 Silver | 1.95 | 1.30 |

| date | home | | away | | venue | pred.home | pred.away |
|-------------|--------------------------------|---|--------------------------------|---|--|------------------|------------------|
| 2014-07-11 | Washington Timbers Forrest B02 | 4 | PCU White B02 | 1 | 2014 PCU Summer Classic U12 Silver | 3.81 | 0.72 |
| 2014-06-29 | Washington Timbers Forrest B02 | 1 | PCU Black B02 | 0 | 2014 Clash At the Border Gold/Silver U12 | 1.43 | 1.28 |
| 2014-06-29 | FC Portland White B02 | 5 | Washington Timbers Forrest B02 | 2 | 2014 Clash At the Border Gold/Silver U12 | 2.29 | 1.67 |
| 2014-06-28 | PCU Red B02 | 1 | Washington Timbers Forrest B02 | 0 | 2014 Clash At the Border Gold/Silver U12 | 1.95 | 0.86 |
| 2014-06-28 | Eastside Timbers Black B02 | 7 | Washington Timbers Forrest B02 | 1 | 2014 Clash At the Border Gold/Silver U12 | 4.66 | 0.40 |
| 2014-06-27 | Washington Timbers Forrest B02 | 5 | Pacific FC Fire B02 | 0 | 2014 Clash At the Border Gold/Silver U12 | 3.42 | 0.63 |